



- ✓ innovative
- ✓ sustainable
- ✓ hygienic

The Sustainable Alternative to Mid Stream Urine (MSU) Collection

Pee-in-Pot (PiP)

Kindness, Respect, Teamwork
Everyone, Every day

Nick Burns Cox, Innovator and Urologist
Tracey Doolan, Infection Prevention & Control Senior Nurse



Kindness, Respect, Teamwork
Everyone, Every day

PIP

- ✓ innovative
- ✓ sustainable
- ✓ hygienic

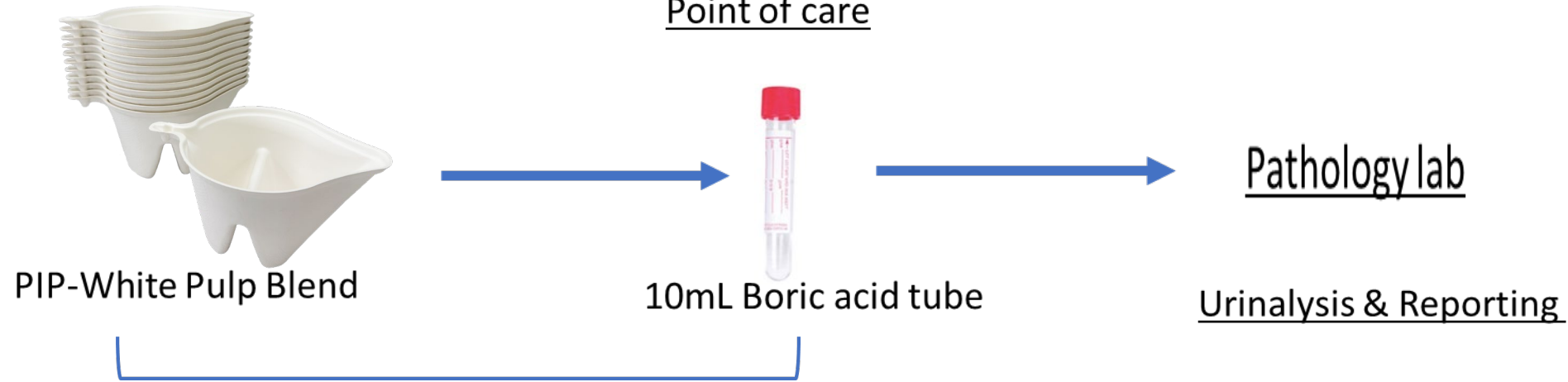
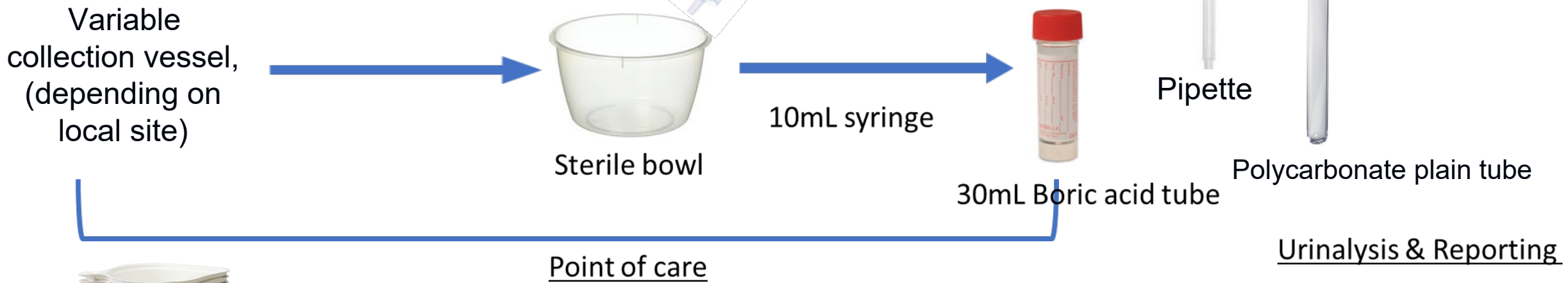
The Problem

Non-sustainable

Time Consuming
for
Staff & Patients

Inconsistency in
practice

Former best practice (SFT) versus the new MSU process using the PiP



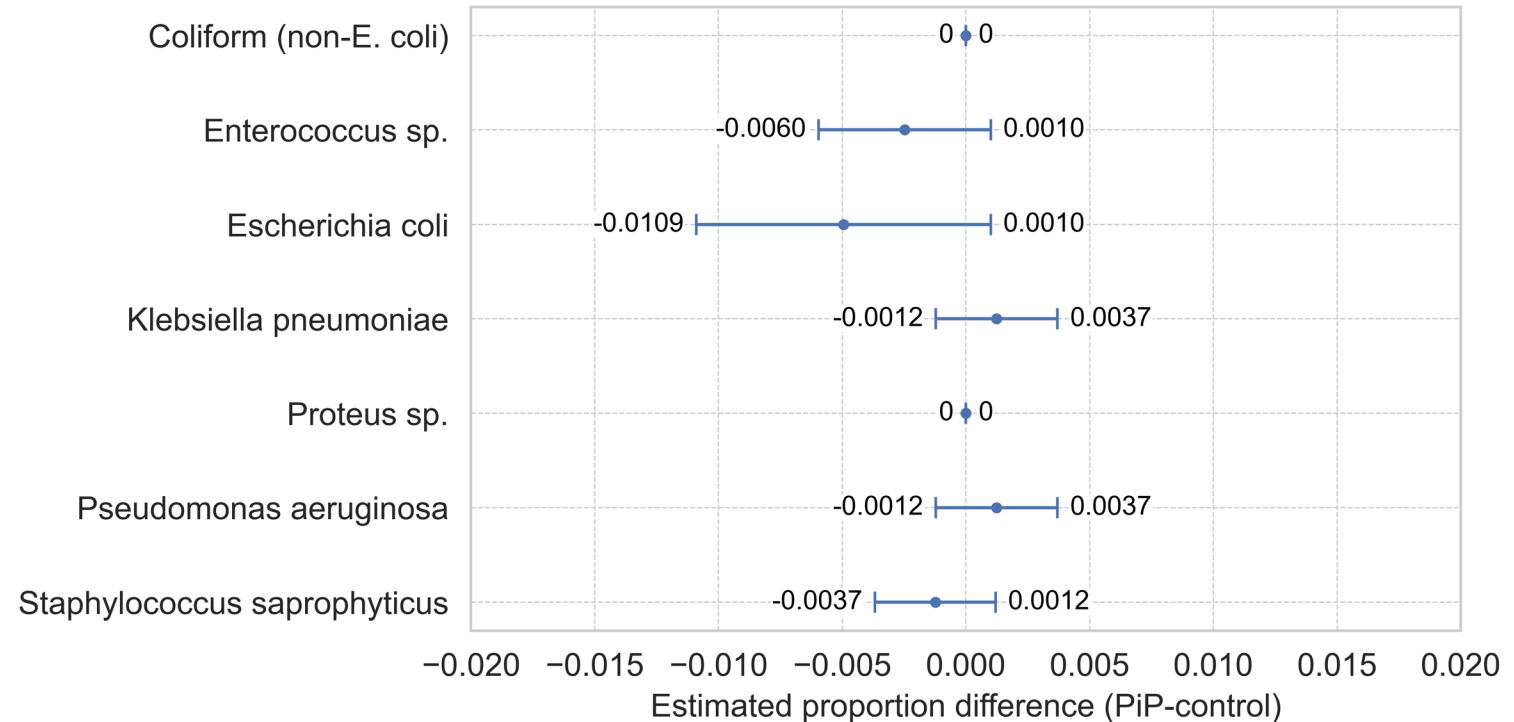
Microbiology Safety Study - Design

- Successful grant awarded by SBRI
- The hypothesis is that Thermofibre, made from blended bamboo fiber and sugar cane, is a safe/ equivalent alternative to single-use sterile plastic for collecting mid-stream urine specimens without affecting culture results.
- A previous study by the South West Academic Health Science Network showed low bacterial growth in Thermofibre kidney dishes. Our study powered needed 1,300 mid-stream samples to detect significant microbiological safety differences.
- 1353 paired samples were collected and underwent microscopy and 808 paired samples were sent for culture.
- The results of the study were analysed against a set of
 - primary outcome - positive and negative culture rate
 - secondary outcomes.- microscopy and heavy mixed growth rates

Outcomes from the Microbiology Study (PiP versus single use sterile plastic vessel)

PRIMARY OUTCOMES:

- Reportable culture results for 7 common bacteria (Positive Culture Results).
- No significant difference based on normal laboratory variation being <2.5%.

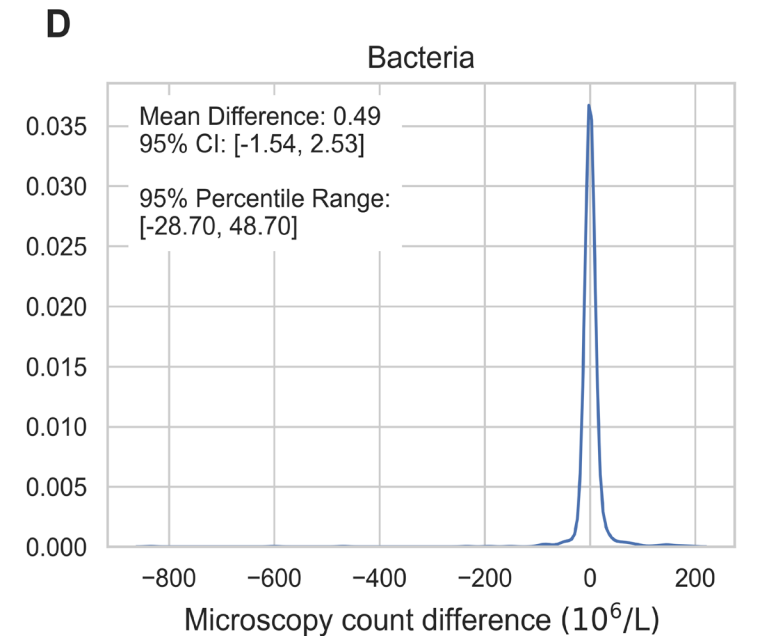
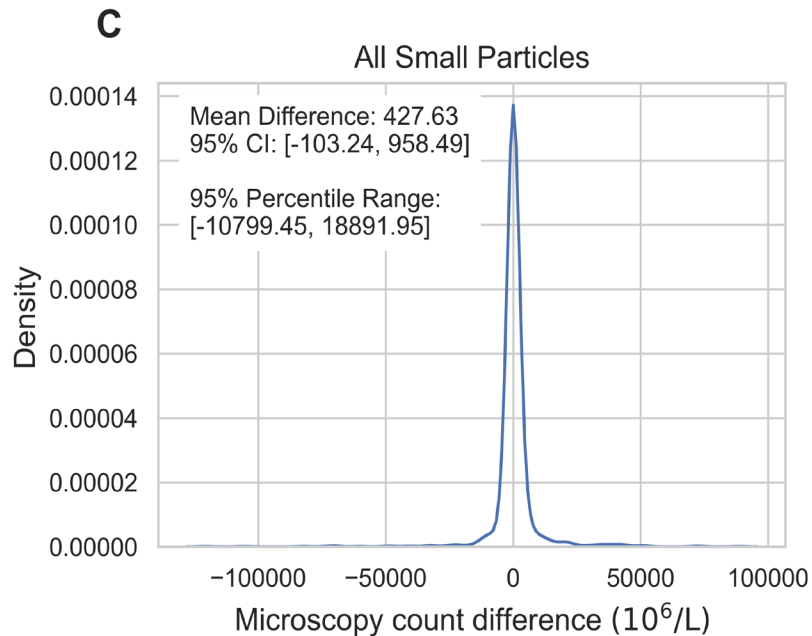
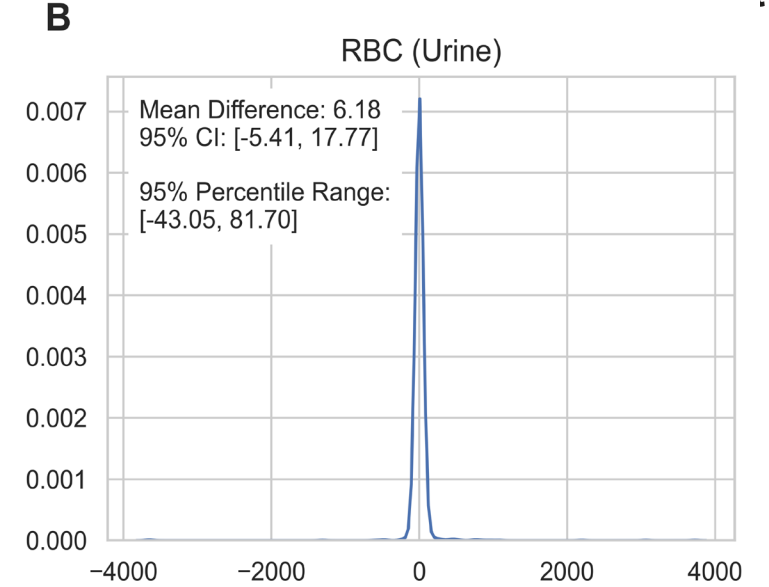
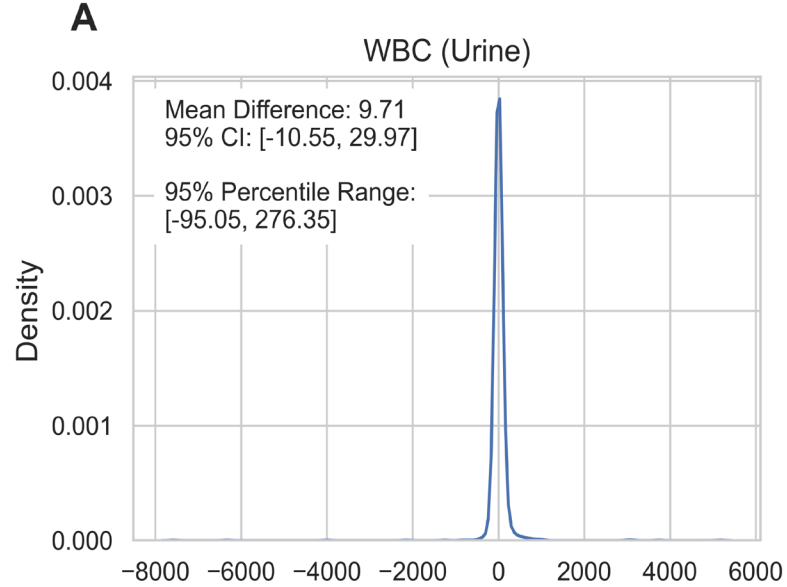


Outcomes (PiP versus single use sterile plastic vessel)

SECONDARY OUTCOMES:

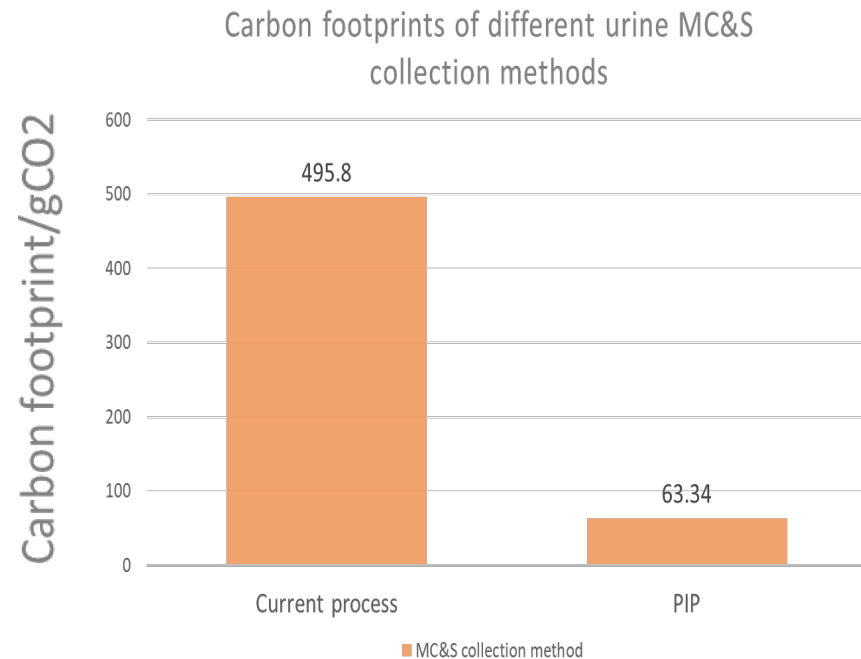
Microscopy indication for culture

statistical
equivalence



Carbon Footprint Reduction Impact of using the PiP for MSU

- Current volume of MSU tests carried out within a hospital setting (Somerset: 29,000/year), 2,500,000 per year (GB)
- 78% minimum carbon reduction from a simplified process
- Estimated carbon savings per annum for NHS 3 tonnes
- The PiP is flushed via a macerator
- 3 plastic items removed from the MSU pathway
- Incineration cost savings > £250 per 1,000 in-pts/Yr.



Cost Saving for Somerset FT

21,000 specimens collected (1000 beds)

Direct

Consumables	PiP + 10ml tube = 32p (ex VAT)	
	Plastic bowl + 30ml tube + 10ml tube = 39p	£1,900 saved
Incineration		£250

Indirect savings

Time	Ward HCA approx. 20seconds	£2,000
	Lab technician approx. 45seconds	£4,000

Current situation

- PiP fully implemented across Somerset in our 2 Acute sites and all 13 of our community hospitals
- PiP roll out in 3 other neighbouring Trusts
- PiP Trial - 3 GP practices in Somerset and one in Devon
 - Devon nursing home
 - 45 other providers have bought the PiP
- Paper accepted for publication to the BMJ Open
- Supported by NHS Green
- Supported by NHS Supply Chain



SUSTAINABILITY AND ENVIRONMENT

Nurses drive rollout of eco-friendly urine collection device

05 AUGUST, 2025 | BY ELLA DEVEREUX



From left, Diane Smallacombe, Tracey Doolan and Olga Richardt

Source: Somerset NHS Foundation Trust

Nurses in the South West of England have been instrumental in trialling and championing a new eco-friendly urine sample collection device, helping to reduce plastic waste and improve patient dignity.



Loading...


SPONSOR FOCUS >>

Challenges, opportunities and the role of CNIOs in shaping safer, smarter healthcare

More Sponsor focus



NHS Supply Chain

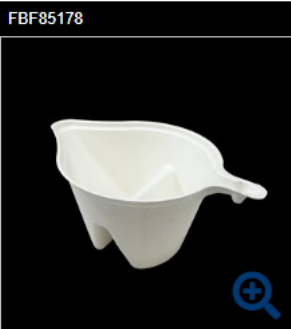
Sign inHide inactive products

[Home](#) [My Supply Chain](#) [Savings](#) [News](#) [Product Information](#) [Categories](#) [Programmes](#) [Suppliers](#) [Events](#) [Contact](#) [Customer Services](#)

[Catalogue Home](#) [Place an Order](#)

[Medical](#) > [Clinical products](#) > [Medical pulp](#) > [Urine sampling cup](#)

[Back](#) | Product details for FBF85178



FBF85178

Urine sampling cup Pee in Pot 350ml urine analysis collection receptacle

Urine sampling cup

4 days lead time

Sign in to order

Add to comparison

Product information	
Manufacturer's product code	PIP25
GTIN	06024951031147
Unit of issue	Case of 250
Lead time	4 days lead time
Brand	PIP
Supplier	POLYCO HEALTHLINE LIMITED
Date added to catalogue	07/02/2025
EClass	FBF - General Medical Surgical Equipment Haemofiltration Tracheostomy Tubes Medical Pulp Products

No nationally agreed alternative products

No nationally agreed similar products

Useful tools

- [Send to a colleague](#)
- [Found an error?](#)
- [Print this page](#)

Case Study



Website Search

Home My Supply Chain Savings News Product Information Categories Programmes Teams Suppliers Events Customer Services

Pee in Pot (PiP) – A Sustainable Shift in Urine Testing Now Available via NHS Supply Chain

30 April 2025

Developed within Somerset NHS Foundation Trust, the PiP (Pee in a Pot) is a sustainable, single-solution pulp vessel that simplifies mid-stream urine (MSU) collection while cutting carbon emissions by up to 85%. Now available through the NHS Supply Chain Innovation DPS (NPC FBF85178), PiP replaces multiple plastic items used in conventional testing, reducing waste, spillage risk, and costs.

Backed by clinical evidence and a multi-year innovation journey, PiP is a powerful example of how NHS-led innovation can drive greener, smarter patient care.

“ We have been using PiPs in our Day Surgery Centre for a while now and find them sturdy and easy to use. They are sustainable and offer a much greener alternative to plastic, reducing waste without compromising on practicality. A great step forward for both patient care and the environment! ”

Lisa Strawbridge, Deputy Clinical Manager, Somerset NHS Foundation Trust

Overview

A team based within Somerset NHS Foundation Trust noticed that mid-stream urine testing practices were very variable across different clinical areas, and that testing typically uses many items of sterile plastic. These are then disposed of by incineration.

For such a simple test, it seemed unusual to see such non-standardised and wasteful practices. Upon consulting nursing staff and healthcare assistants, it became clear that there was a real need to develop a better solution with a lower risk of urine spillage.

When further investigating variation in practices locally, it was noted that one clinical area performing a high volume of urine testing used clean pulp to collect urine samples instead of sterile plastic. The team analysed the urine microbiology results for this clinical service and found that the results did not differ when compared with similar services using sterile plastic to collect urine.

With the dual aims of reducing the environmental impact of urine testing and developing a urine testing pathway that was simple and standardised, the team set about designing a solution.

New process for collecting mid-stream urine (MSU) sample

With fewer and more simplified steps for the collection and testing of patients' urine, there is only one single-use plastic product used.

- Collect in PiP
- Pour into sample tube
- Send to laboratory for testing

Kindness, Respect, Teamwork
Everyone, Every day



Website Search

Home My Supply Chain Savings News Product Information Categories Programmes Teams Suppliers Events Customer Services

Pee in Pot (PiP) – A Sustainable Shift in Urine Testing Now Available via NHS Supply Chain

30 April 2025

Developed within Somerset NHS Foundation Trust, the PiP (Pee in a Pot) is a sustainable, single-solution pulp vessel that simplifies mid-stream urine (MSU) collection while cutting carbon emissions by up to 85%. Now available through the NHS Supply Chain Innovation DPS (NPC FBF85178), PiP replaces multiple plastic items used in conventional testing, reducing waste, spillage risk, and costs.

Backed by clinical evidence and a multi-year innovation journey, PiP is a powerful example of how NHS-led innovation can drive greener, smarter patient care.

“ We have been using PiPs in our Day Surgery Centre for a while now and find them sturdy and easy to use. They are sustainable and offer a much greener alternative to plastic, reducing waste without compromising on practicality. A great step forward for both patient care and the environment! ”

Lisa Strawbridge, Deputy Clinical Manager, Somerset NHS Foundation Trust

Overview

A team based within Somerset NHS Foundation Trust noticed that mid-stream urine testing practices were very variable across different clinical areas, and that testing typically uses many items of sterile plastic. These are then disposed of by incineration.

For such a simple test, it seemed unusual to see such non-standardised and wasteful practices. Upon consulting nursing staff and healthcare assistants, it became clear that there was a real need to develop a better solution with a lower risk of urine spillage.

When further investigating variation in practices locally, it was noted that one clinical area performing a high volume of urine testing used clean pulp to collect urine samples instead of sterile plastic. The team analysed the urine microbiology results for this clinical service and found that the results did not differ when compared with similar services using sterile plastic to collect urine.

With the dual aims of reducing the environmental impact of urine testing and developing a urine testing pathway that was simple and standardised, the team set about designing a solution.

New process for collecting mid-stream urine (MSU) sample

With fewer and more simplified steps for the collection and testing of patients' urine, there is only one single-use plastic product used.

- Collect in PiP
- Pour into sample tube
- Send to laboratory for testing



Website: www.peeinpot.com

NHS

Somerset
NHS Foundation Trust



[Product](#) [About](#) [Resources](#) [Evidence](#) [FAQs](#) [Contact Us](#)

[Order Now](#)



Pee-in-Pot

A Sustainable Alternative for Midstream Urine (MSU) Collection to Other Methods

Completely biodegradable and seven times more environmentally friendly compared to collecting urine in sterile bowls (*John, 2024*).

[Order Now](#)



NHS professionals
recommend PIP

Kindness, Respect, Teamwork
Everyone, Every day



Commercial Development Manager
anna.vere@somersetft.nhs.uk



Director of Commercial Development and Project SRO
nael.clarke@somersetft.nhs.uk



Infection, prevention & Control
tracey.doolan@somersetft.nhs.uk



Consultant Urologist
nick.burns-cox@somersetft.nhs.uk